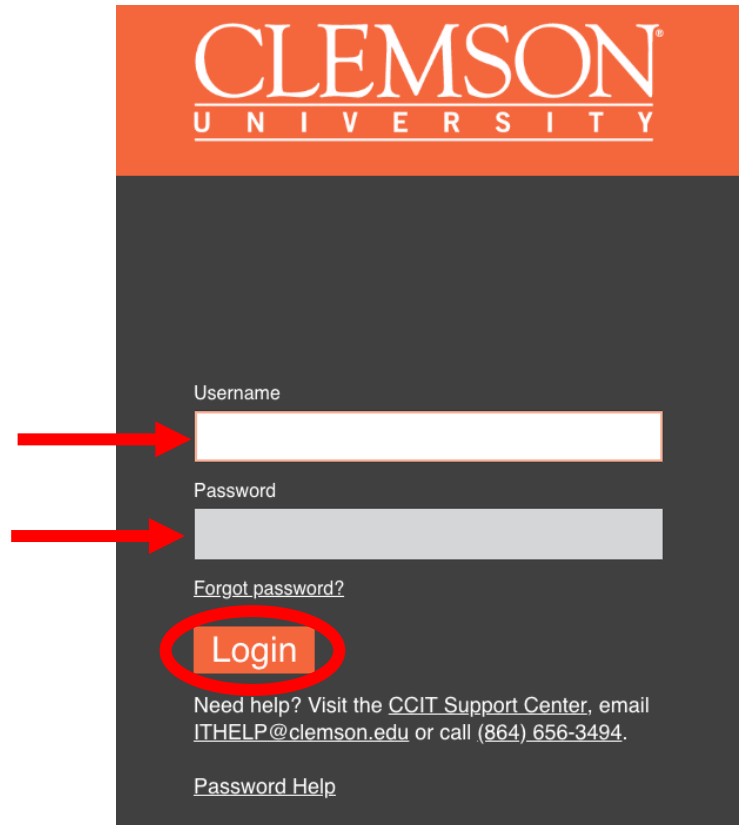


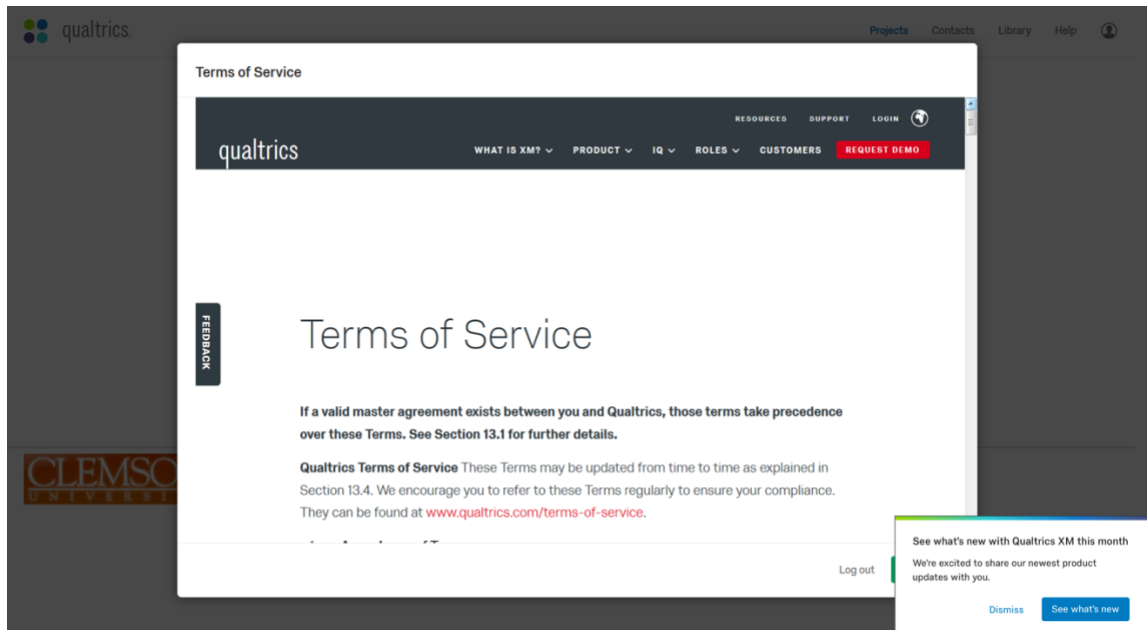
Want to sign up for a Clemson Qualtrics account? Follow the steps below to get started.

1. Go to clemson.qualtrics.com using your internet browser.
2. Depending on whether or not you are already logged into the Clemson network, you may be prompted to enter your Clemson credentials and authenticate using Duo.

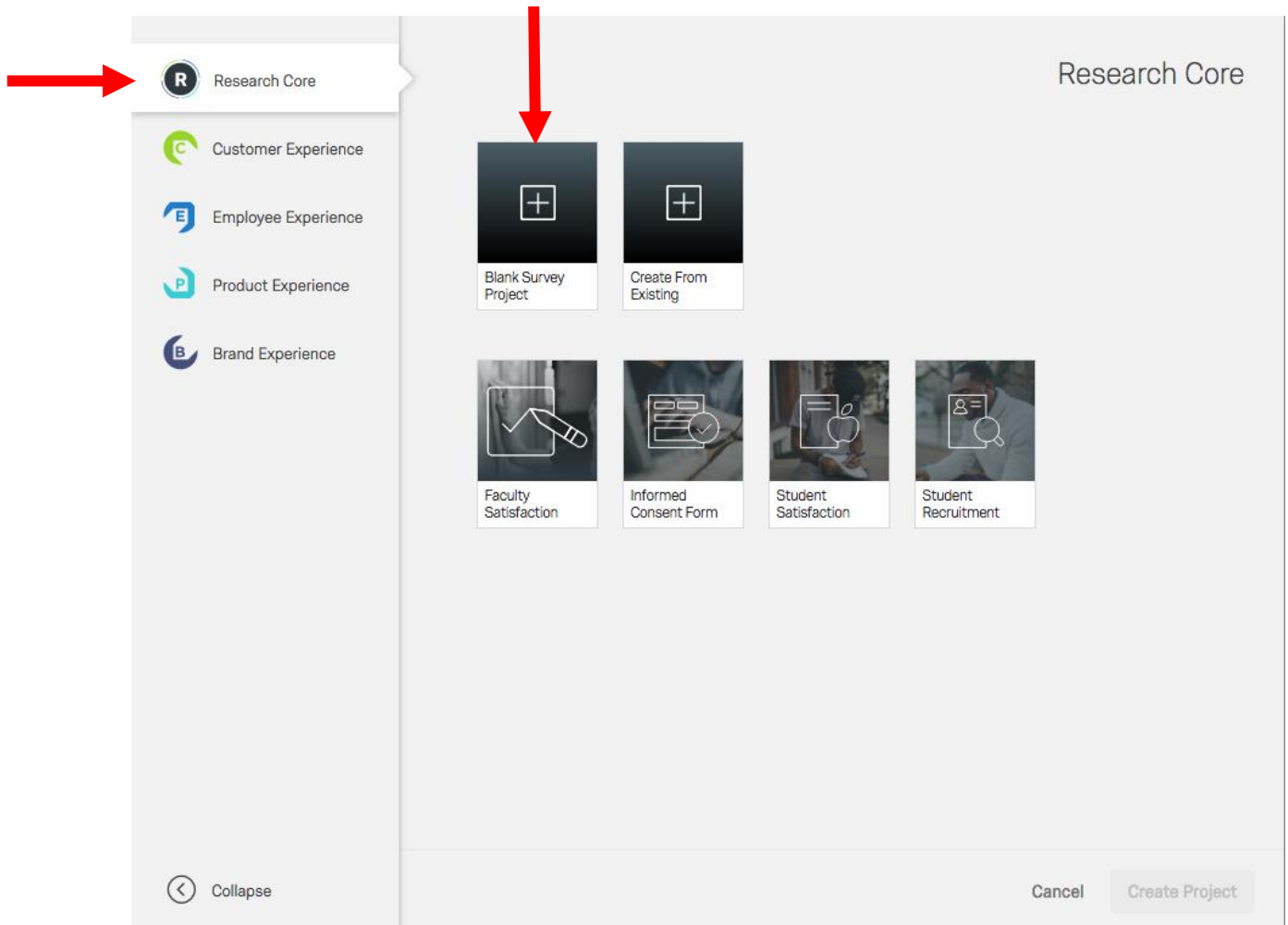


The image shows a login form for Clemson University. At the top, the Clemson University logo is displayed in white text on an orange background. Below the logo, the form is set against a dark grey background. It features two input fields: a white 'Username' field and a grey 'Password' field. Two red arrows point to these fields from the left. Below the password field is a blue link for 'Forgot password?'. A red circle highlights the 'Login' button, which is a red rectangle with white text. At the bottom of the form, there is a line of text: 'Need help? Visit the [CCIT Support Center](#), email ITHELP@clemson.edu or call (864) 656-3494.' and a blue link for 'Password Help'.

3. Upon first successful log-in, you will be prompted to read and accept Qualtrics's Terms of Service. To use Qualtrics, you must agree to the Terms of Service, also available at www.qualtrics.com/terms-of-service.



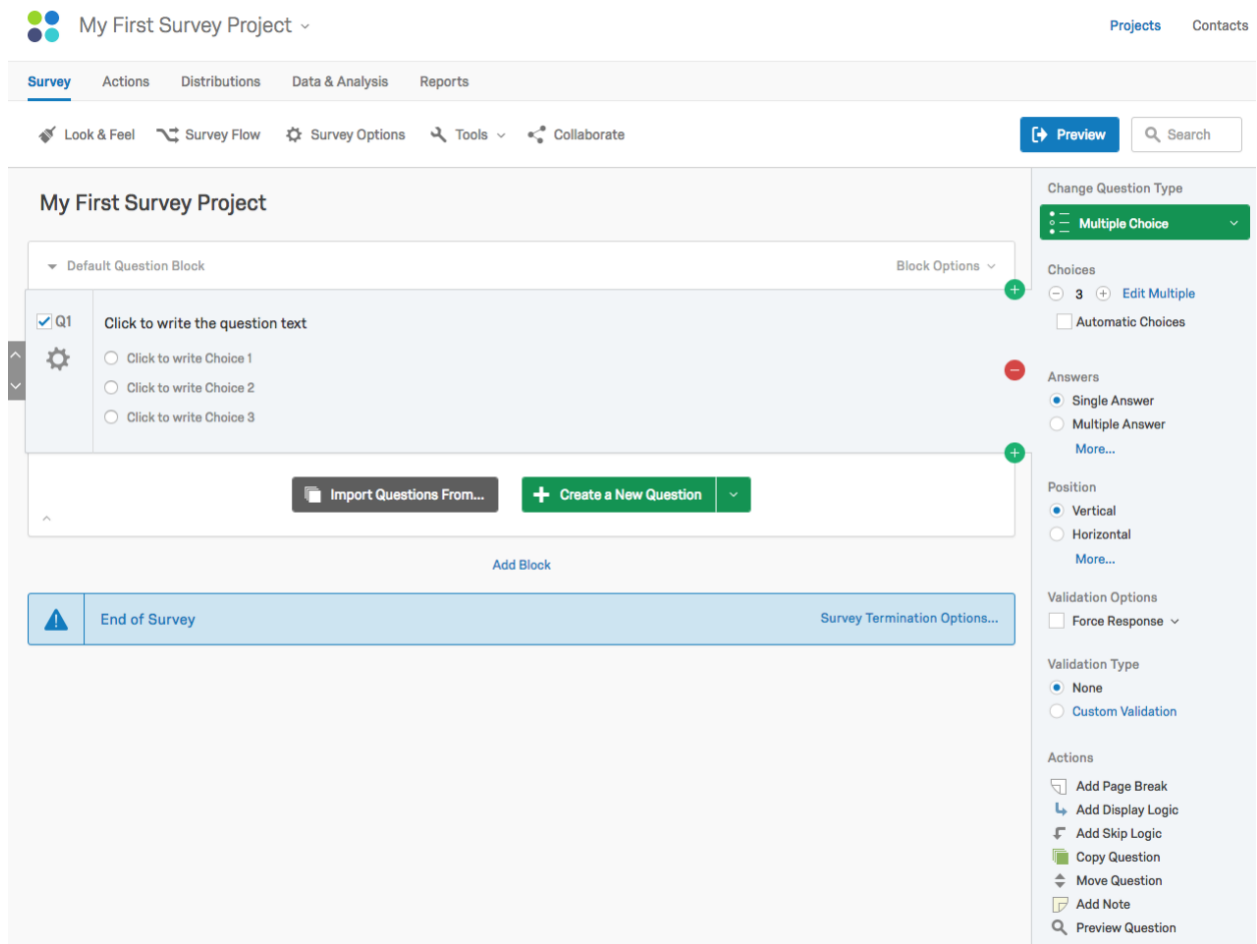
- Once you agree to the Terms of Service, you will be provided with an initial project creation screen. **Clemson currently provides access to the Research Core only.** To create a new survey project, ensure you are in the Research Core section, and select *Blank Survey Project*.



5. You will be asked to name your first project. (Be sure to name it something recognizable.) Then select *Create Project*.

The screenshot displays the 'Research Core' interface. On the left, a sidebar lists navigation options: Research Core (selected), Customer Experience, Employee Experience, Product Experience, and Brand Experience. The main content area is titled 'Blank Project' and includes a sub-header 'Start with a blank survey project and build it to suit your needs. [Learn More](#)'. Below this, a 'Project Name' input field contains the text 'My First Survey Project'. A red arrow points to this input field. At the bottom right, there are two buttons: 'Cancel' and 'Create Project'. A red arrow points to the 'Create Project' button. A 'Collapse' button is visible in the bottom left corner of the sidebar.

6. Now you can begin creating a survey. Explore the platform and utilize the extensive self-help and on-demand learning resources for the Research Core available on the [Qualtrics Website](#).



Additional Resources:

- [24/7 Live Qualtrics Support](#)
- [Qualtrics Resource Library](#)
- ITHelp@clemson.edu